

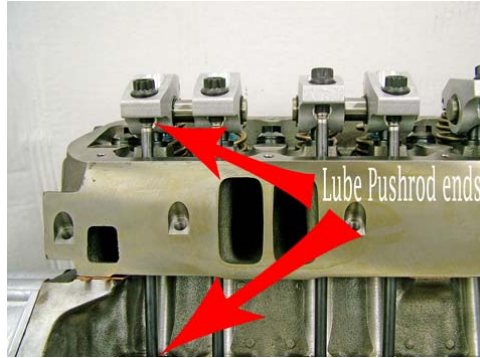
## Hughes Magnum Shaft Mount Rockers (11/2009)

Thank you for your purchase of our “real Chrysler” Magnum shaft mounted rocker arm. You will find they are very easy to install and adjust.

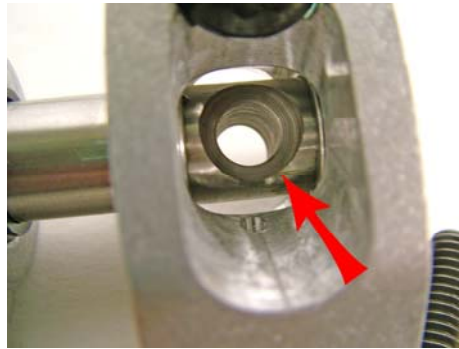
The installation is very straight forward. Always check for pushrod clearance when installing high ratio rocker arms, especially on the in the tunnel for the intake pushrods.

---

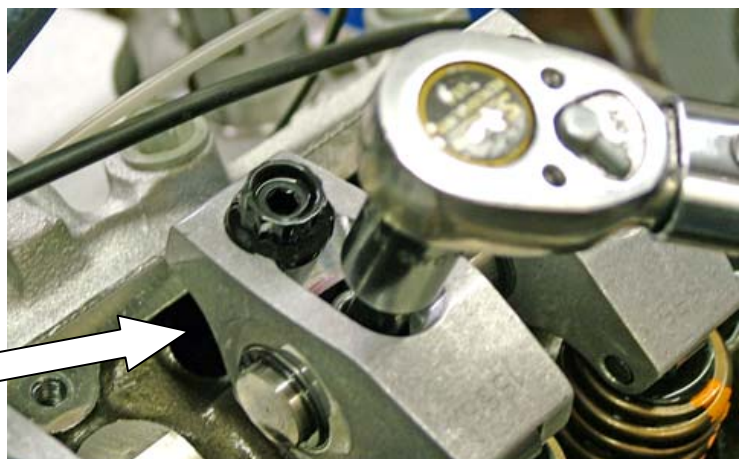
1. Install the pushrods first as they cannot be installed after the rockers. Coat the tips of the pushrods with the enclosed extreme pressure grease.  
*Note: We do not recommend washing the rockers. The needle bearings are packed with grease.*



2. Install the rockers. The shafts set in the saddle of the pedestals. The machined flat spots on the shafts go up.

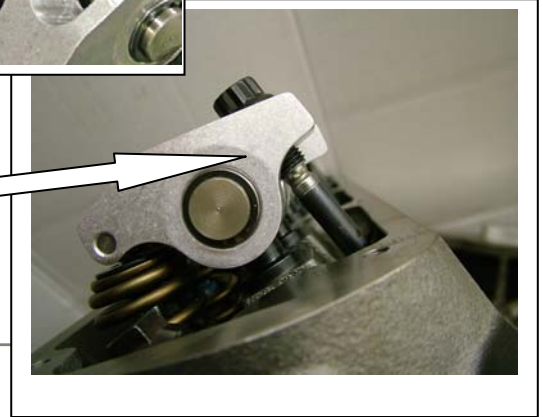


3. Rotate the crankshaft so that the cylinder you are working on is at T.D.C. of the compression stroke (both valves closed). Make sure the pedestals properly align with the rocker shafts before tightening. Torque the hold down screws to 30 ft. lbs.  
**Check for pushrod clearance in tunnel.**



4. Adjust the lash, or preload, as required.

*Note:* Due to the differences in block heights, heads, gaskets, lifters, cam base circles, lobe lift etc... The rocker adjusting screw has no "normal" position. As long as the jam nut is on 5 turns or more you are ok. Longer pushrods are available if you need them, or, we can make custom pushrods. (If you do want custom pushrods the rocker adjuster screw and the pushrod centerline must form a straight line at 50% of total lobe lift.



5. If you are going to add oil, pour it over the rockers.

6. After about 500 miles, recheck your valve adjustment. Then you should be good to go for several thousand miles.

#### Valve Adjustments for Hydraulic Lifters

The rollers should have about 2 turns of pre-load; otherwise they are a little noisy. The flat tappets are quiet with about 1 turn of preload.

#### Pushrods

We offer oil thru pushrods already assembled.  
See chart at right for application and part number.

<u>Lifter Type</u>	<u>Pushrod P/N</u>
Solid Flat Tappet	#57600
Hydraulic Flat Tappet	#57750
Hydraulic Roller Tappet	#57450

If you are using stock valve covers the baffle may contact the rockers. In that case, split the baffle, front to rear (using a whizzer wheel) and then bend them up to clear the rockers as shown in this photo.

As usual, if you have any questions please call.



**Hughes Engines, inc.**  
23334 Wiegand Lane  
Washington, IL 61571  
(309) 745-9558

