

ROCKER SADDLE SHIM INSTRUCTIONS

P/N's 1708 – 1709 – 1710

If you do not need to stack the shims no trimming is required, however, in some cases you may find that you need to stack these shims to achieve the proper rocker arm geometry and/or pushrod length. If this is the case, we recommend trimming the lengths of the shims to get them to “nest” together better, and prevent distortion of the shaft of pedestal.

Trim the shims as follows:

The bottom shim, trim to $.187'' \pm .010''$

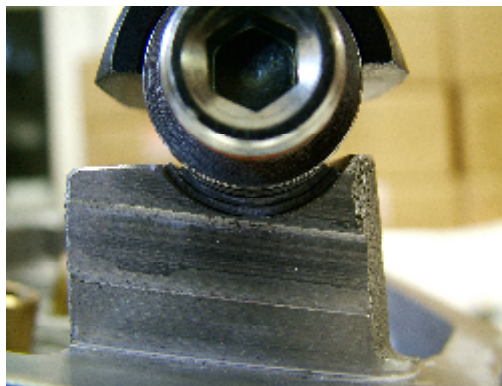
The second shim, trim to $.130'' \pm .010''$

The third shim, trim to $.085'' \pm .010''$

When stacking, compress each shim separately before final tightening.



How to measure trimmed shim.



Layout of stacked shims.



If you have any questions, give us a call!
309-745-9558